

Explosives Demolition  
Consultancy Service  
Site Management



## WATER TOWER DEMOLITION, RAF ST ATHAN.

When Cuddy Group one of the United Kingdoms leading demolition company were tasked to demolish a disused concrete and brick 28m high water tower as part of the units £2.5 million regeneration project it was IndEx and SES they contacted to work with them on the bringing down the structure safely and within the tight confines of the site.

The water tower was surrounded on all sides by live buildings, on three sides the buildings were within 10m of the tower and on the fourth side ran the RAF camps services including a 300mm cast iron water main only 1m from the tower base, this not only served the camp but also surrounding residential properties,

Close liaison with the RAF by Cuddy site management and IndEx was essential to minimise disruption and maintain the smooth running of the live RAF base during both the preparation and blow down of the structure.

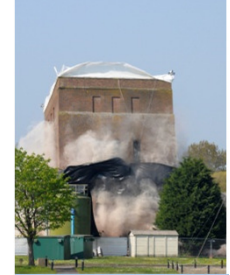
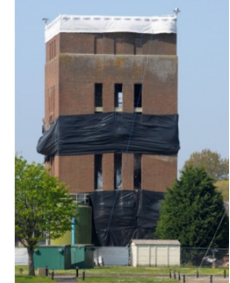
Because of the close proximity of the nearby buildings and services a vertical collapse of the tower was essential, The design team achieved this by the use of advanced pre-weakening, 12kg of explosives and 270 individual millisecond delay detonators.

On Sunday 17<sup>th</sup> April in front of the station Air Commodore the tower was imploded, the tower fell virtually within its own footprint, causing nil damage to the surrounding buildings and services.

Within 20 min of blow down the area was reopened an the base once again fully operational.

For more information on water tower demolition please contact

[info@independentexplosives.com](mailto:info@independentexplosives.com)



UK Office

3 Southfield Road  
Ripon  
North Yorkshire  
HG4 2NX

Tel +44 (0)7825751918

Email

[info@independentexplosives.com](mailto:info@independentexplosives.com)

Website

[www.independentexplosives.com](http://www.independentexplosives.com)